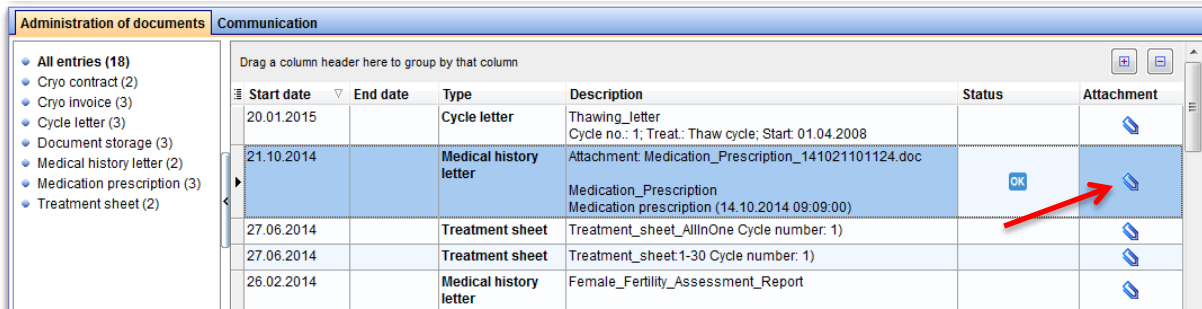


MedITEX instructions for clinical IT administrators:

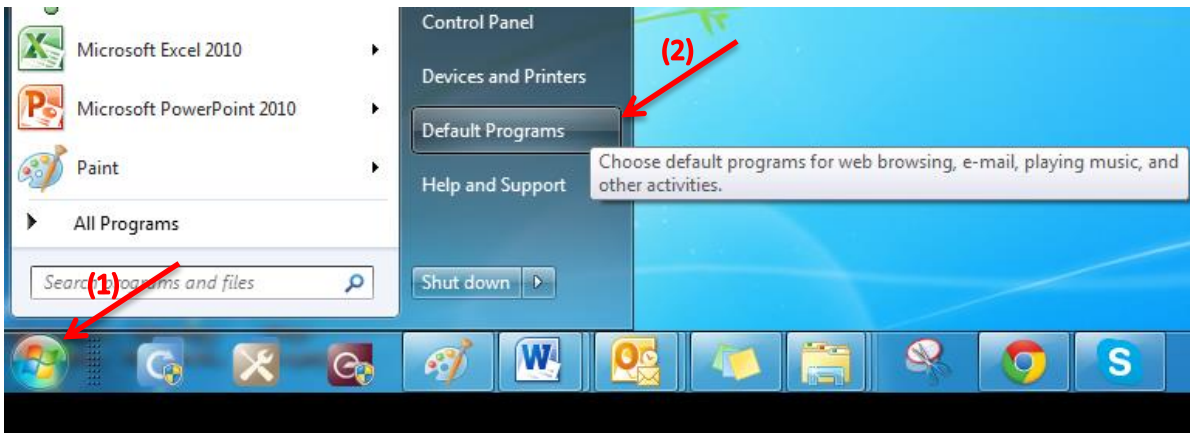
## How to set default-programs for saved files (US images, text files, ...)?

This instruction describes how to change the chosen default program of a file in Windows.

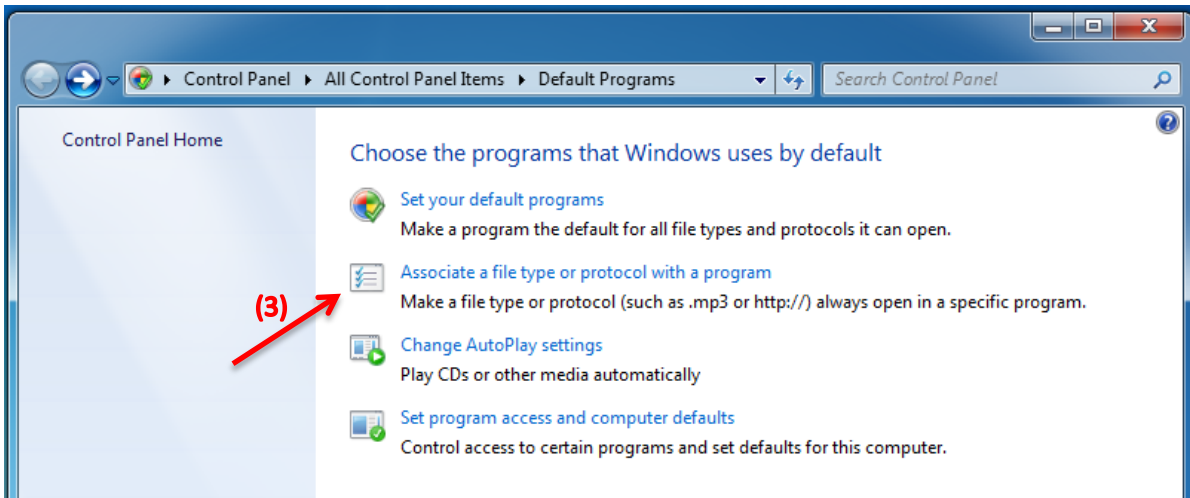
1. If you can't open saved documents or pictures, please check their default-program settings.



2. To check these settings, navigate to "Start" (1) and "Default Programs" (2).



3. Click on the “Associate a file type or protocol with a program” (3) option.



4. In this window you can see all existing file types. Search for the required type, and check the current default program associated with it. For example: US pictures normally have the default program “Windows Photo Viewer” (4).

You can change the default program with the “Change program...” Button (5) at the top-right of the window.

