

MedITEX instructions for clinical IT administrators:

MedITEX DICOM Server Installation

1. Create the folder structure and copy files

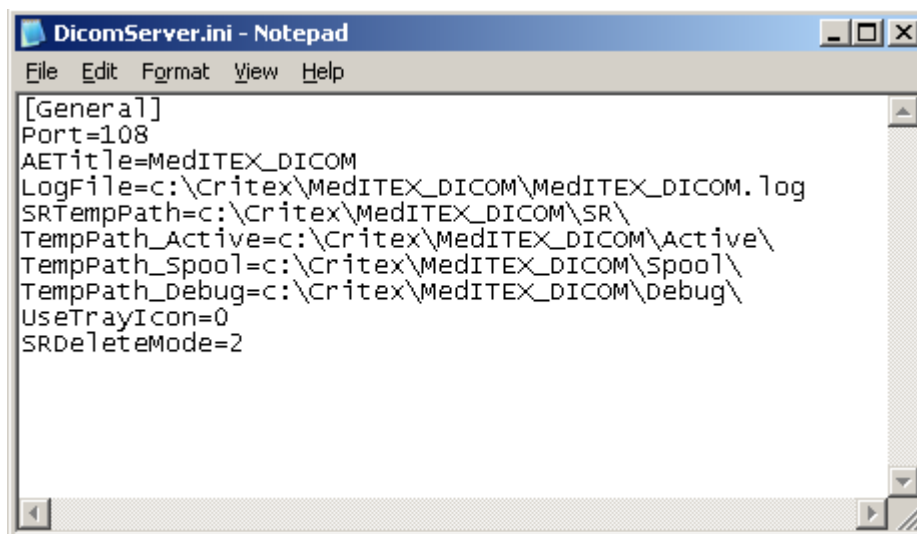
Create the folder "*MedITEX_DICOM*" at the same level where "*MedITEX IVF*" is located (e.g. "*C:\Critex\MedITEX_DICOM*") and place the following files in there:

- *Dicom_server.ini*
- *Dsr2xml.exe*
- *MedITEX_Dicom_Server.bat*
- *MedITEXDcmServer.exe*
- *MedITEXDcmServer_Install.bat*
- *MedITEXDcmServer_UnInstall.bat*

(DICOM log file will automatically be created within installation process later on.)

Copy the "*dsr2xml.exe*" file also to the "*MedITEX IVF*" folder where the main program is located.

2. Adjust the paths in "*Dicom_server.ini*" file

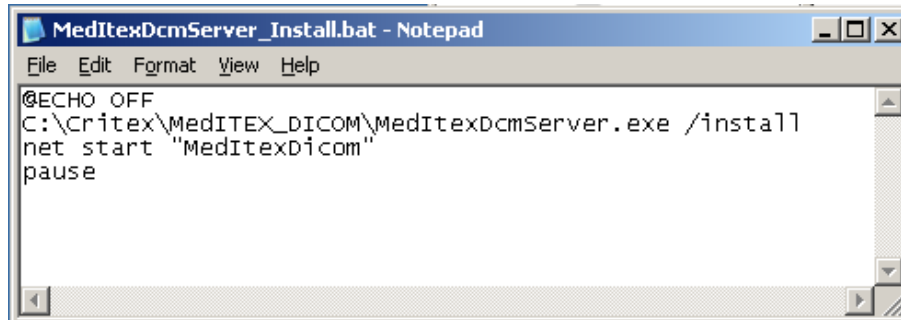


```
DicomServer.ini - Notepad
File Edit Format View Help
[General]
Port=108
AETitle=MedITEX_DICOM
LogFile=c:\Critex\MedITEX_DICOM\MedITEX_DICOM.log
SRTempPath=c:\Critex\MedITEX_DICOM\SR\
TempPath_Active=c:\Critex\MedITEX_DICOM\Active\
TempPath_Spool=c:\Critex\MedITEX_DICOM\Spool\
TempPath_Debug=c:\Critex\MedITEX_DICOM\Debug\
UseTrayIcon=0
SRDeleteMode=2
```

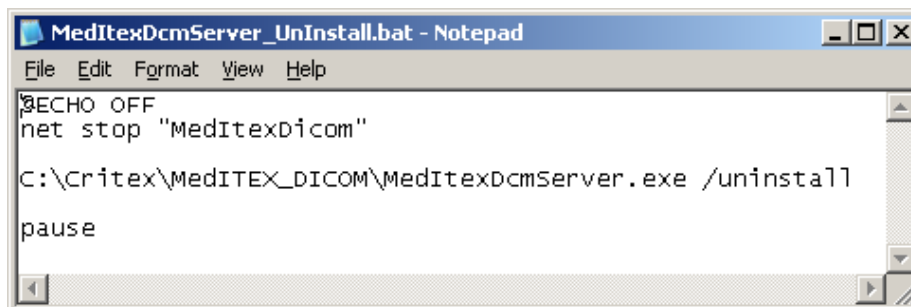
Adjust the paths as shown above for "*LogFile*" and folders "*SR*", "*Active*", "*Spool*" and "*Debug*".

3. Adjust the path in *"MedITEXDcmServer_Install.bat"* and *"MedITEXDcmServer_UnInstall.bat"* files

After you have created the folder structure as mentioned on step 1, adjust the path in *"MedITEXDcmServer_Install.bat"* and *"MedITEXDcmServer_UnInstall.bat"* like described in the images below:



```
MedITEXDcmServer_Install.bat - Notepad
File Edit Format View Help
@ECHO OFF
C:\Critex\MedITEX_DICOM\MedITEXDcmServer.exe /install
net start "MedITEXDicom"
pause
```



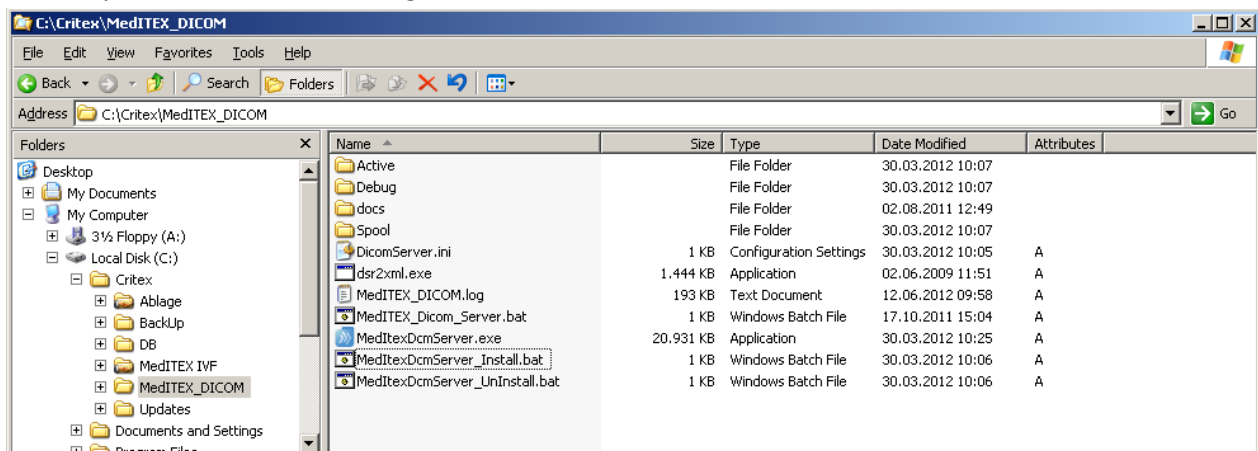
```
MedITEXDcmServer_UnInstall.bat - Notepad
File Edit Format View Help
@ECHO OFF
net stop "MedITEXDicom"

C:\Critex\MedITEX_DICOM\MedITEXDcmServer.exe /uninstall
pause
```

4. Installing DICOM server

Run the file *"MedITEXDcmServer_Install.bat"*.

This will install **MedITEX DICOM**, create the needed folder structure and start the service. The directory should look like the image below:



Check if the log file *“MedITEX_DICOM.log”* created automatically is written and has corresponding entries.

5. Create a planned task for restarting the DICOM service

After everything is installed and running, create a planned task on the server to restart the DICOM service once a day.

This task prevents DICOM from hanging up unexpectedly.

Set the batch file *“MedITEX_Dicom_Server.bat”* in the folder created on step 1 as the necessary program to be executed.

Make sure the correct administrator password is entered; otherwise the task execution may expire.

6. Share the DICOM folder

Share the folder *“MedITEX_DICOM”* to the network, the same way *“MedITEX IVF”* was shared. This will enable the support team to have easy access for maintenance purposes.