

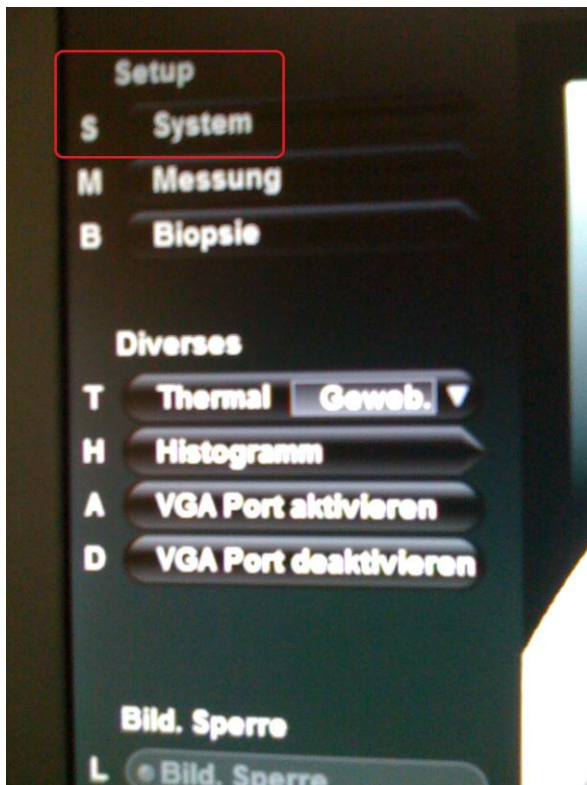
GE US device

Document type: support instruction
Version: 1.0
Date: 07.02.2012
Created by: Horst G. A. Butz

Content

1. Topic 1: DICOM configuration

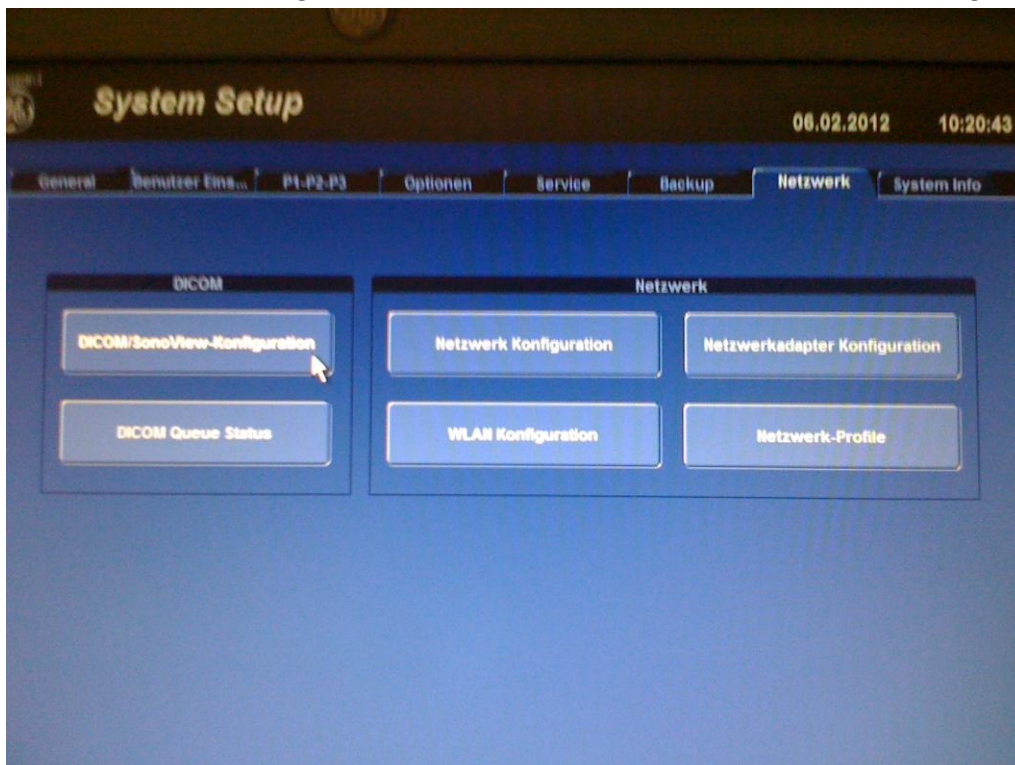
Select Setup/System:



Then you have the setup mask:



Select the “Network” flag and there click on the button “DICOM/SonoView-Configuration”:



Three services have to be added: STORE, STR.REPORT, WORKLIST, each with the IP-address of the MedITEX IVF server and port 108 :

Services	Alias	AE Title	IP Address	Port	Color / Grösse
STORE	v730	v730	172.16.99.99	3104	Farbe / Original
STORE	MedITEX	MedITEX	10.0.0.14	108	Farbe / Original
STR.REPORT	MedITEX	MedITEX	10.0.0.14	108	
WORKLIST	MedITEX	MedITEX	10.0.0.14	108	

Better to see right here for instance:

DICOM Configuration

DICOM Configuration

AE Title: Voluson

Station Name: US1

Retry Count: 2

Retry Count Seq.: 4

Retry Interval: 1 min.

Timeout (s): 45

Sound Notification: ☐

Default

Test Connection

Ping:

Verify:

Services	Alias	AE Title	IP Address	Port	Color / Size
<input checked="" type="checkbox"/> STORE	MEDITEX	MEDITEX	127.0.0.1	108	Color / Original
<input checked="" type="checkbox"/> STR.REPORT	MEDITEX	MEDITEX	127.0.0.1	108	
<input checked="" type="checkbox"/> WORKLIST	MEDITEX	MEDITEX	127.0.0.1	108	

Add

Edit

Delete

Save&Exit

Exit