

## Cumulative pregnancy (PG) rate per follicle aspiration (FA)

- Calculation of cumulative pregnancy rate per follicle aspiration (FA) considers fresh cycles (IVF, ICSI, IVF/ICSI) where FA is performed, as well as corresponding thawing cycles (thawing cycles where material from these cycles is used).
- Calculation is performed according to the following rules:
  1. **Fresh cycle with FA is ART1, ART2 or ART3**, depending whether it is first, second or third attempt to get pregnant; fourth, fifth or later attempts are not considered.
  2. Cycle has **positive outcome** if either fresh cycle itself, or some of corresponding thawing cycles, ends with clinical pregnancy (PG). Cycle with positive outcome contributes to the final sum of achieved PG with 1:
    - if cycle is ART1 cycle (first attempt), ART1\_PG is increased by 1
    - if cycle is ART2 cycle (second attempt), ART2\_PG is increased by 1
    - if cycle is ART3 cycle (third attempt), ART3\_PG is increased by 1.
  3. Cycle has **negative outcome** if neither fresh cycle itself, nor any corresponding thawing cycle, ends with clinical pregnancy. Cycle with negative outcome contributes to the final sum of achieved PG with 0.
  4. **After achieving “ongoing” pregnancy** in a certain cycle (no matter whether it is first, second or third attempt), **next fresh cycle with FA** (if exists) **will be considered as next ART1 cycle** – first attempt to again get pregnant (to get next child).
 

! **Important:** it is not checked whether the child is actually born or not, but only if the PG is “ongoing”.
  5. If **pregnancy** in a certain cycle is **not achieved at all, or it is interrupted for any reason** (not “ongoing” pregnancy), the **next fresh cycle with FA** (if exists) **will be considered as next attempt to get pregnant**: if cycle is ART1 (first attempt), next cycle will be considered as ART2 (second attempt); if cycle is ART2 (second attempt), next cycle will be considered as ART3 (third attempt); if cycle is already ART3 (third attempt), **calculation stops** (as mentioned, fourth, fifth or later attempts are not considered).
 

! **Important:** not only first three cycles of a couple are used for calculation of cumulative PG rate, but all cycles (in certain time-range) which represent first, second or third attempts to get pregnant (one couple can have several ART1, ART2 or ART3, depending on the number of children they have/are willing to have). As mentioned, if a certain fresh cycle does not end with clinical PG, corresponding thawing cycles are analysed in order to determine if at least one of them ends with clinical PG.

Cumulative rates:

$$Rate\ 1 = \frac{ART1\_PG}{ART1\_aspiration} \cdot 100\%$$

$$Rate\ 2 = \frac{ART1\_PG + ART2\_PG}{ART1\_aspiration} \cdot 100\%$$

$$Rate\ 3 = \frac{ART1\_PG + ART2\_PG + ART3\_PG}{ART1\_aspiration} \cdot 100\%$$

**ART1** – first attempts to get pregnant (fresh cycle with FA)

- ART1\_aspiration – total number of FA in all first attempts to get pregnant
- ART1\_PG – total number of PG achieved in all first attempts (fresh or corresponding thawing cycles)

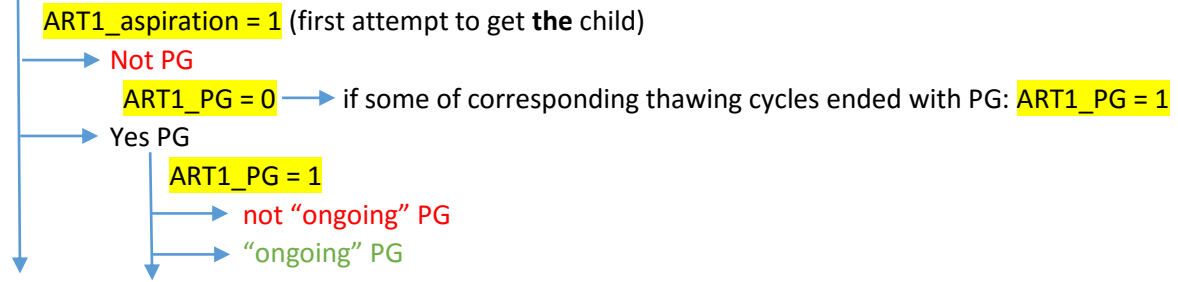
**ART2** – second attempts to get pregnant (fresh cycle with FA)

- ART2\_aspiration – total number of FA in all second attempts to get pregnant
- ART2\_PG – total number of PG achieved in all second attempts (fresh or corresponding thawing cycles)

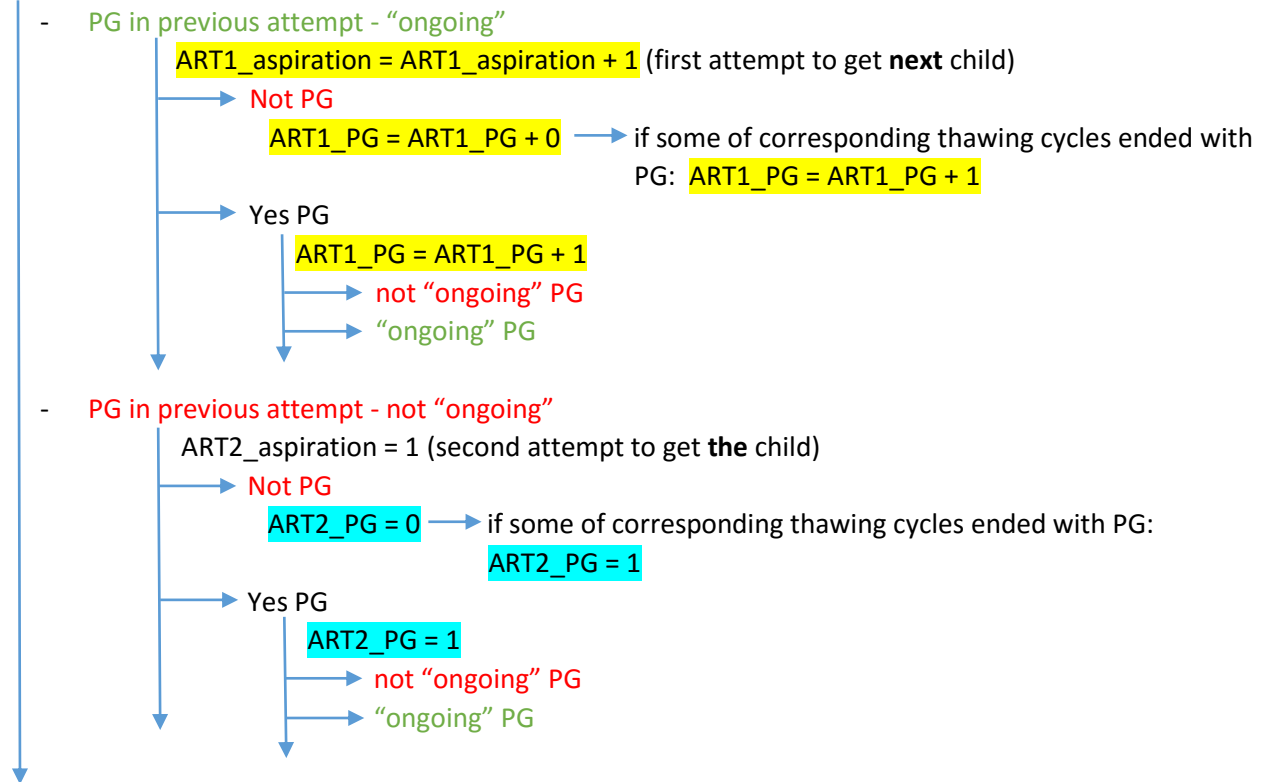
**ART3** – third attempts to get pregnant (fresh cycle with FA)

- ART3\_aspiration – total number of FA in all third attempts to get pregnant
- ART3\_PG – total number of PG achieved in all third attempts (fresh or corresponding thawing cycles)

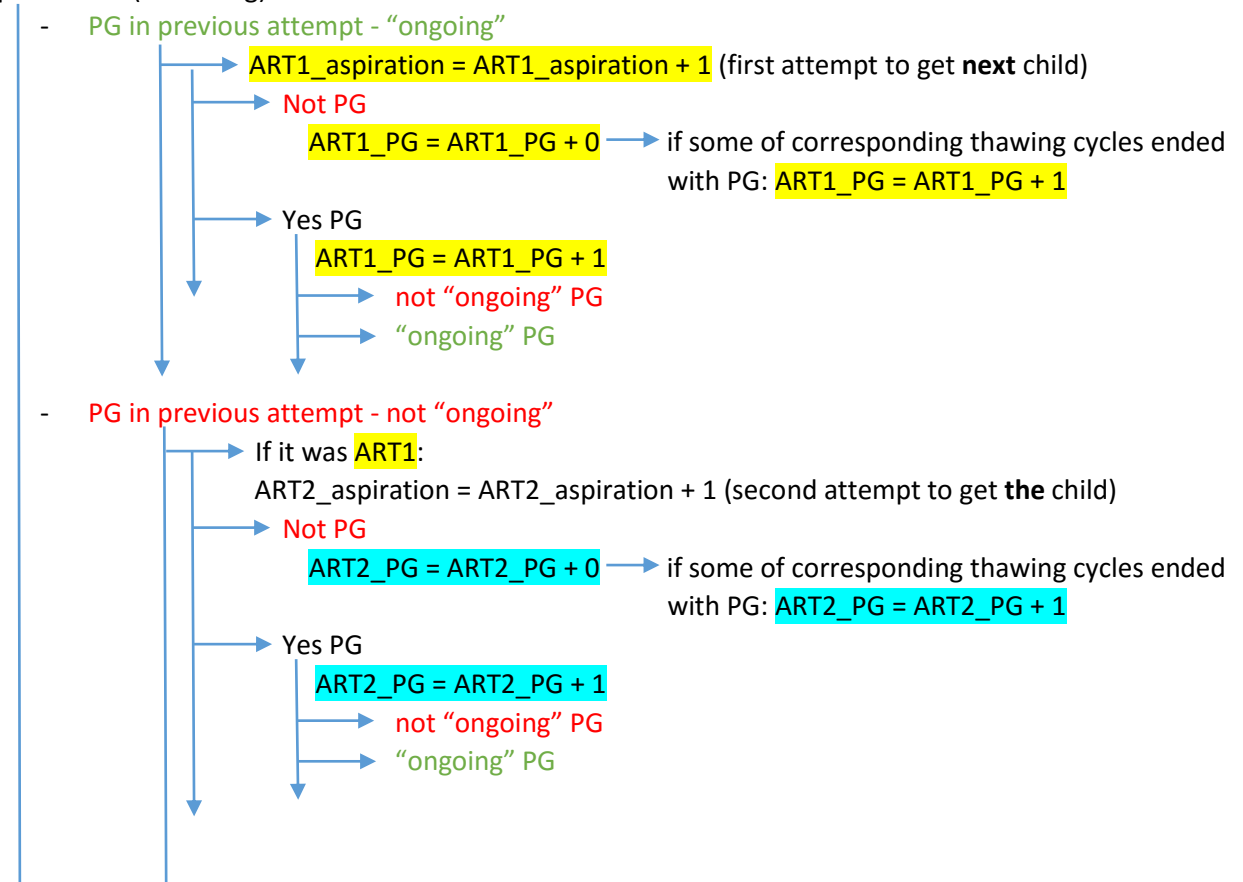
1. FA performed (+ freezing)

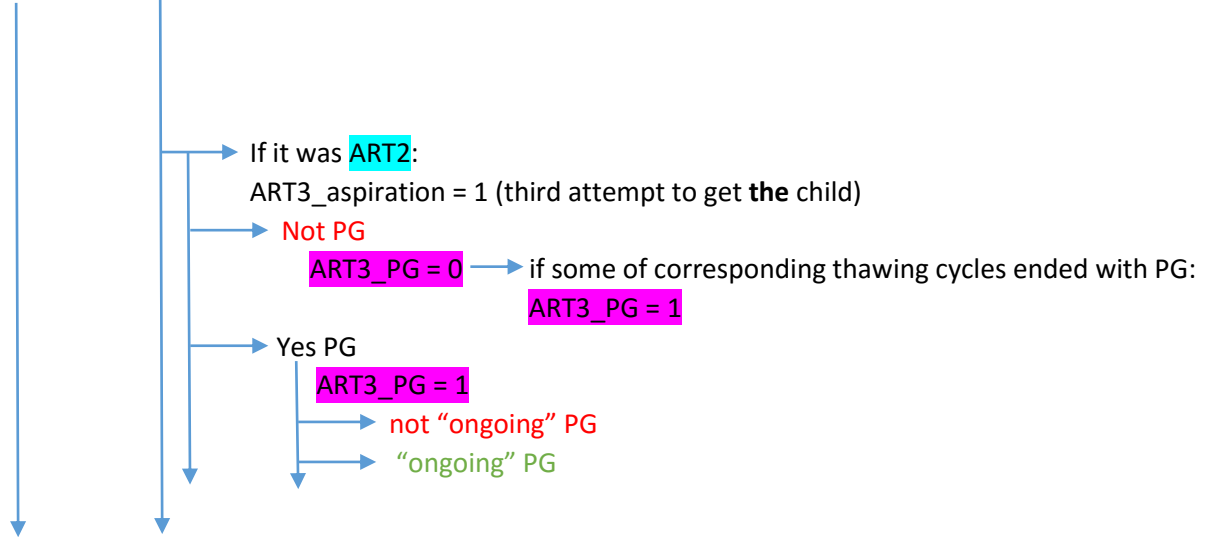


2. FA performed (+ freezing)



3. FA performed (+ freezing)





#### 4. FA is done (+ freezing)

